

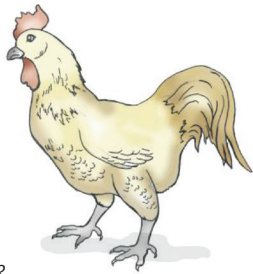
ANIMAL HEALTH FACT SHEET FOR LEAD FARMERS

THE IMPORTANCE OF HIGH QUALITY LIVESTOCK

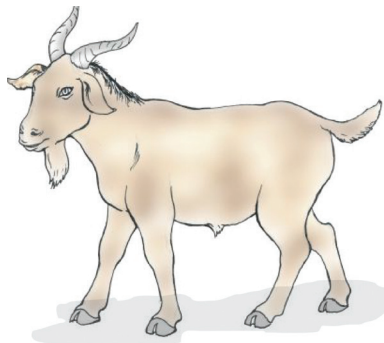
High quality, locally adapted bulls/rams/roosters play an important role in the production of high quality livestock.

- High quality livestock are more resistant to diseases and fetch higher prices.
- In Matabeleland, 4 out of 10 livestock deaths are due to diseases.
- These deaths can be prevented. Prevention is better than cure! Hence the farmer's motto must be:

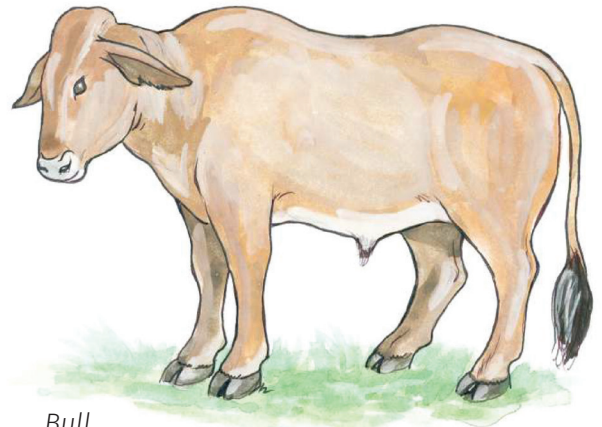
'Prevention! Prevention! Prevention!'



Cock



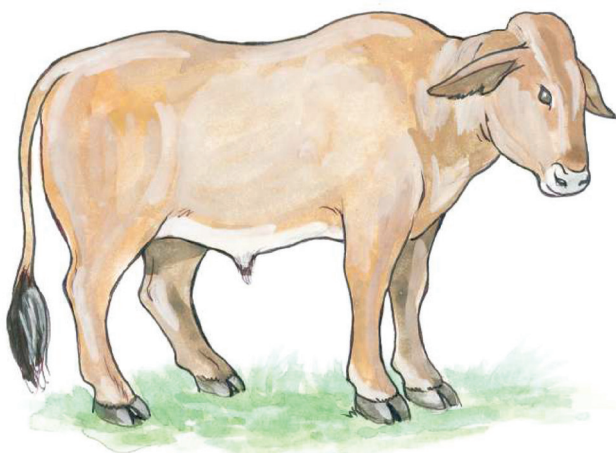
Ram



Bull

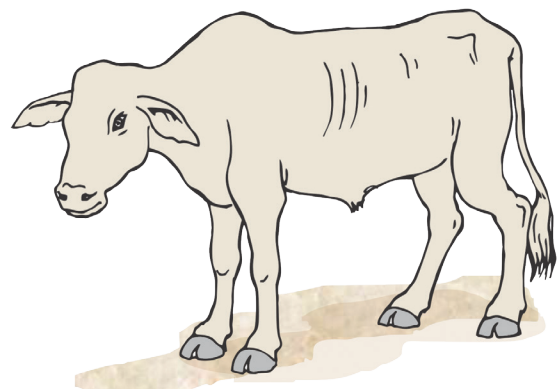
THE IMPORTANCE OF NUTRITION

- Well fed animals are not prone to disease attack.
- Well fed animals recover faster from sickness than poorly nourished animals.
- Well fed animals are more fertile.



Well fed healthy livestock.

VS



Poorly fed and sickly animal.



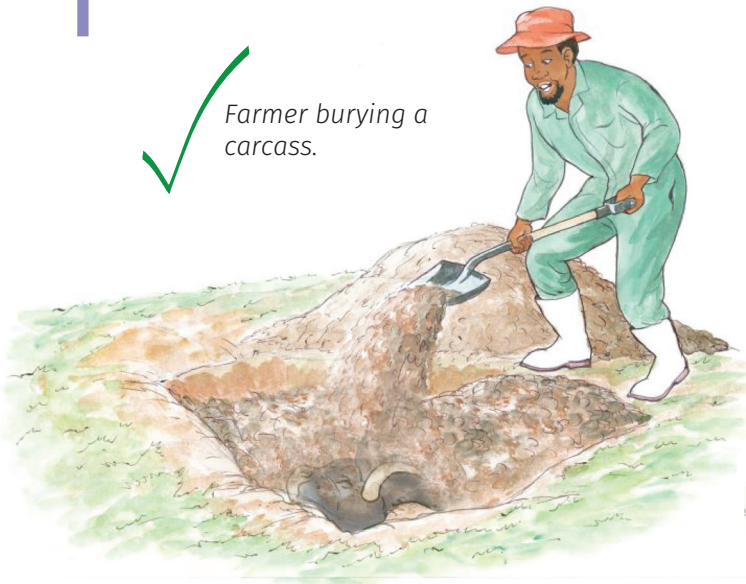
USAID
FROM THE AMERICAN PEOPLE



CNFA
Cultivating New Frontiers
in Agriculture

DISEASE PREVENTION STRATEGIES

1 Burying or burning livestock that die of unknown causes reduces disease build-up and spread to both humans and livestock.

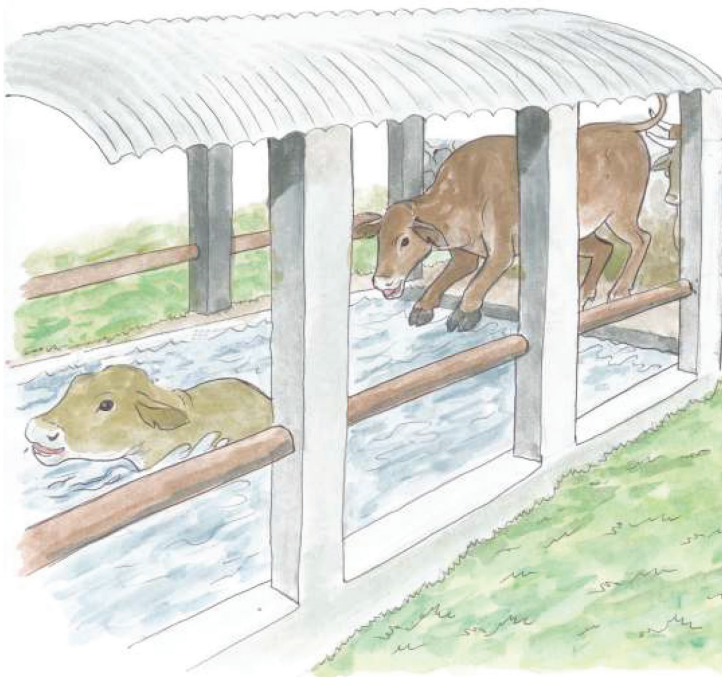


Farmer burying a carcass.



Farmer skinning an animal that has died of unknown causes.

2 Dipping (plunge, pour on, spraying, spot dressing) eliminates vectors of tick borne and other diseases.



Plunge dipping.



Pour on





Spot dressing.

A race and a crush.



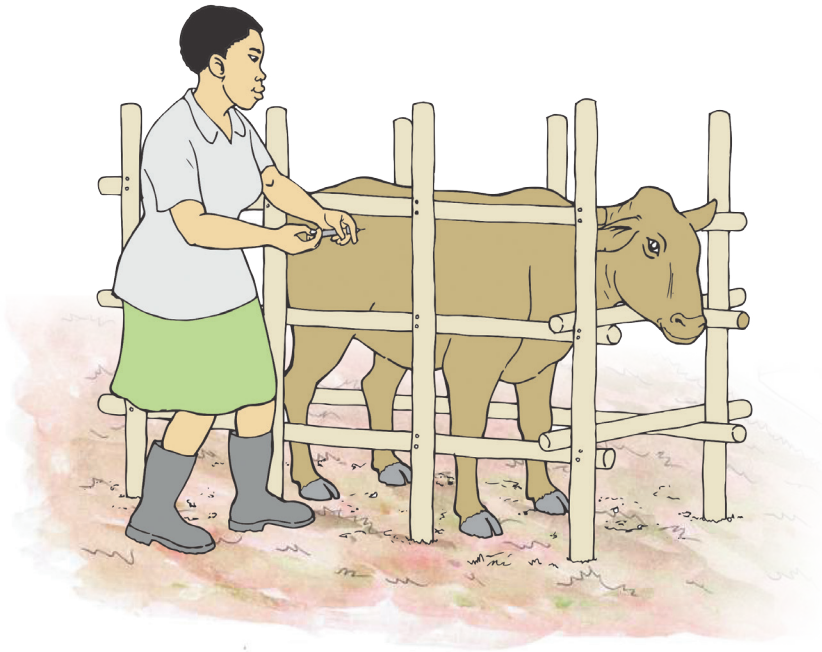
A race with a crush enables a farmer to dip, vaccinate, dose and treat livestock easily.

3 Dosing eliminates internal livestock parasites.



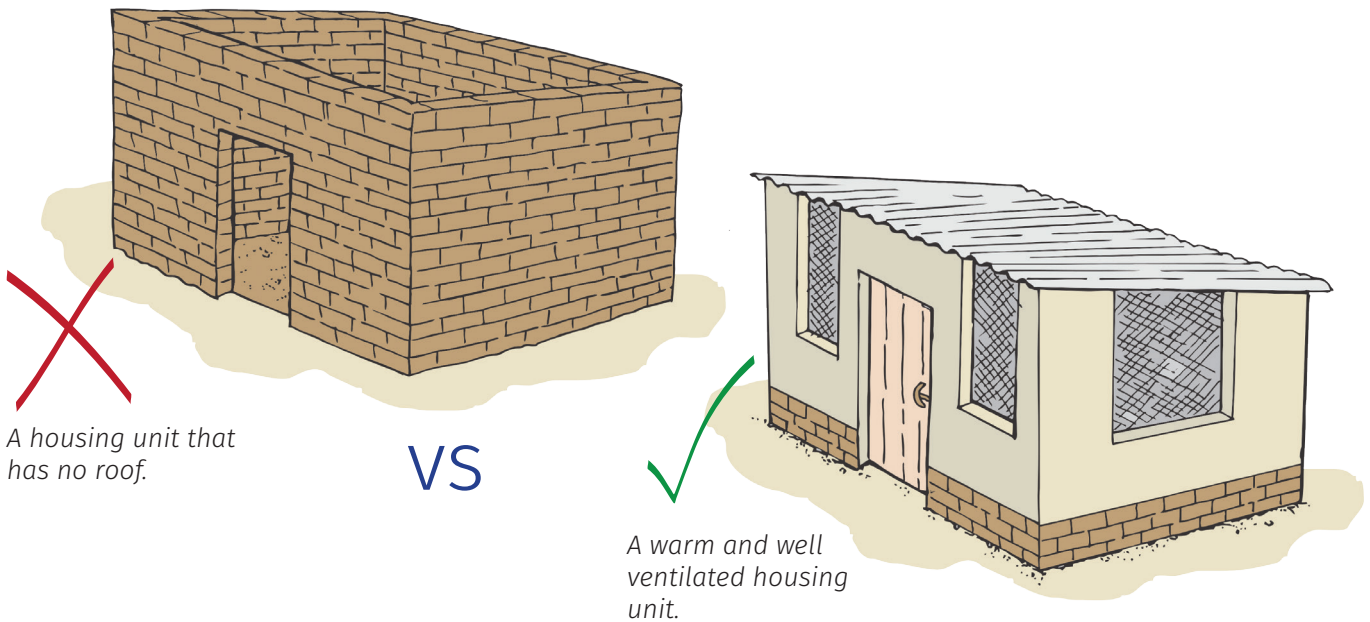
4

Vaccinations make livestock resistant to diseases.



THE IMPORTANCE OF HOUSING AND HANDLING FACILITIES

- Warm, well ventilated and clean housing prevents disease build-up and spread.



NB: Consult your nearest extension agent if you need more information that is not covered in this module.