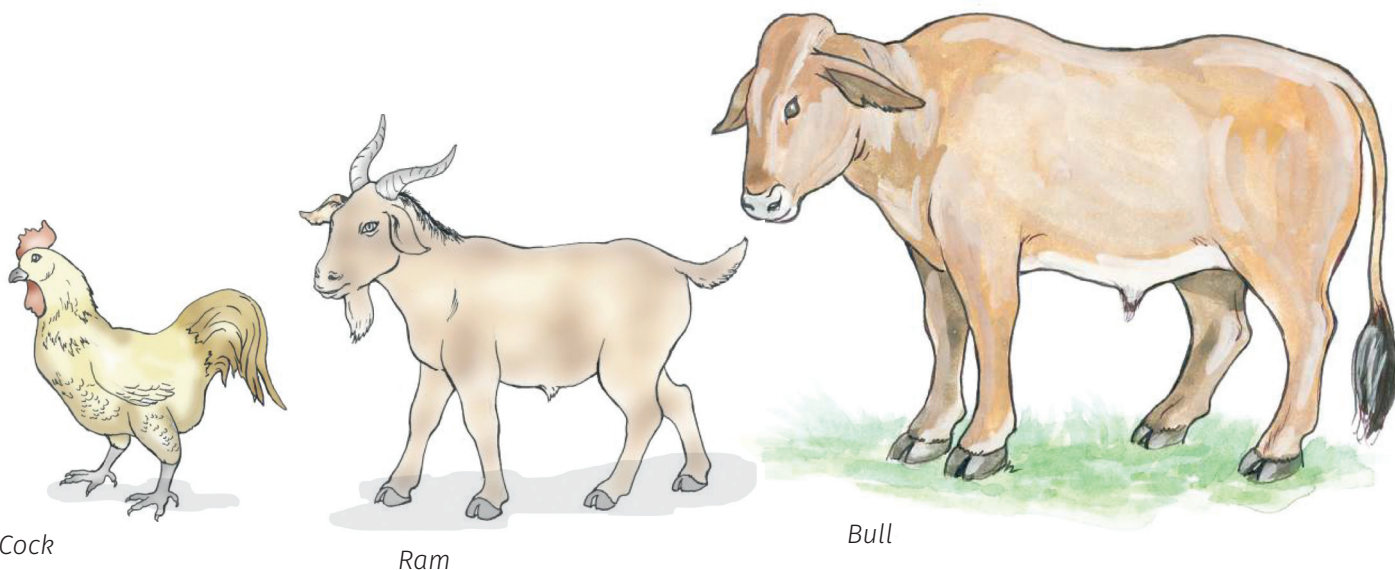


# LIVESTOCK QUALITY IMPROVEMENT FACT SHEET FOR LEAD FARMERS

## THE IMPORTANCE OF HIGH QUALITY LIVESTOCK

- High quality, locally adapted livestock breeds are important in successful livestock production.
- High quality, locally adapted bulls/rams/roosters play an important role in the production of high quality livestock.



## THE IMPACT OF INBREEDING ON LIVESTOCK

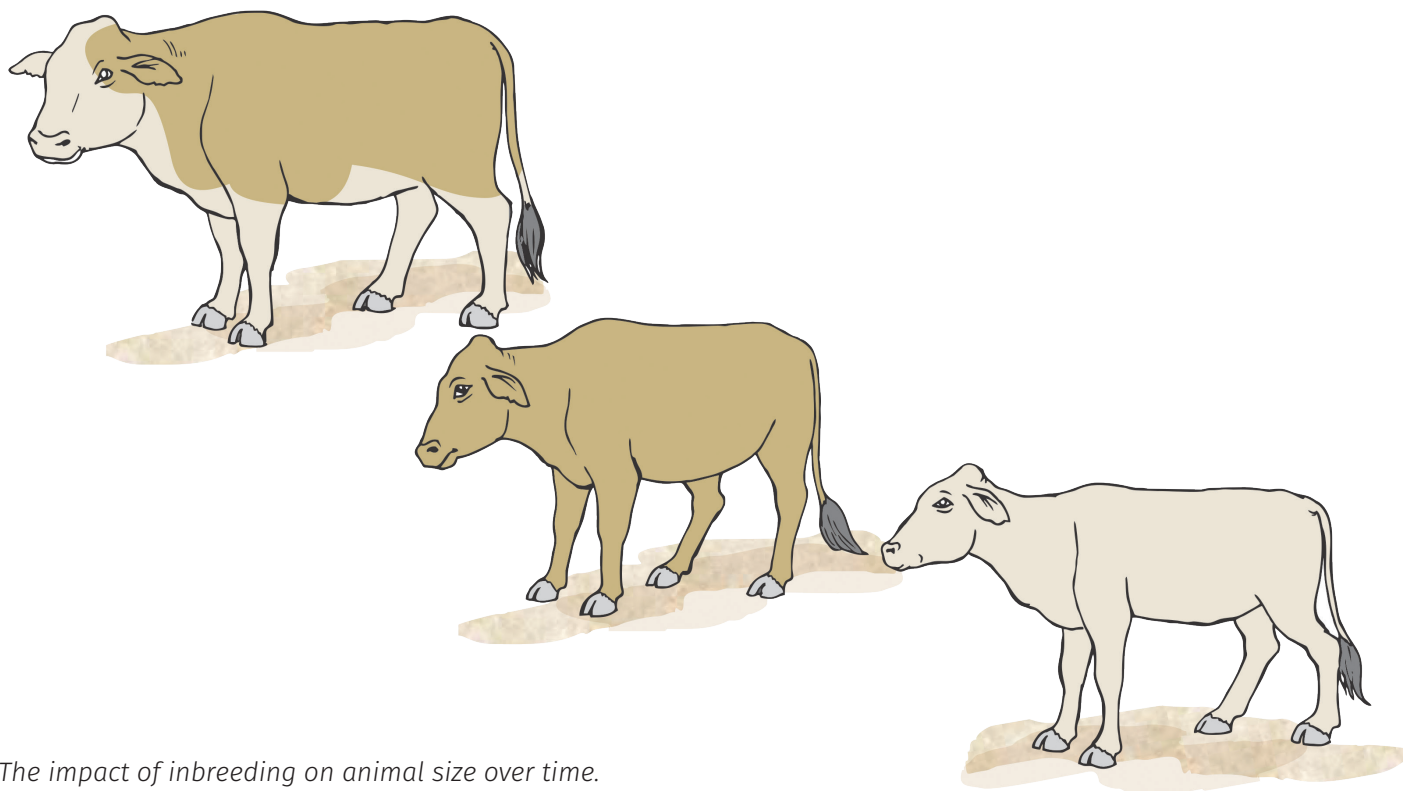
- Inbreeding contributes to the production of poor quality livestock.
- A bull/ram/rooster left in the herd for a continuous period of more than three years increases the chances of inbreeding.
- All male calves/kids/chickens born within the herd/flock if not castrated or sold to distant neighbours will increase the chances of inbreeding.
- Bull/ram/rooster exchange between distant neighbours helps to break the inbreeding cycle. The buying in of bulls/rams roosters helps to break the inbreeding cycle.



**USAID**  
FROM THE AMERICAN PEOPLE



**CNFA**  
Cultivating New Frontiers  
in Agriculture

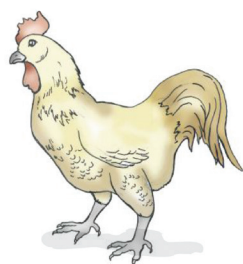


*The impact of inbreeding on animal size over time.*

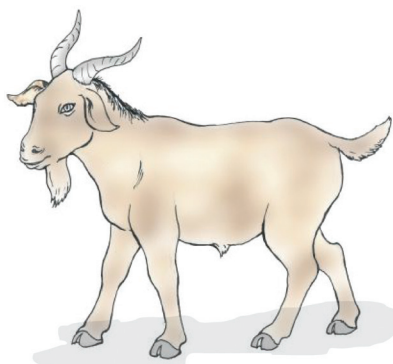
Artificial insemination (AI) is a tool that can be used to break the inbreeding and disease cycles and improve the quality of livestock.

## THE IMPORTANCE OF NUTRITION AND HEALTH MANAGEMENT

- Good nutrition contributes to the production of high quality livestock.
- Good health management contributes to the production of high quality livestock.



Cock



Ram



Bull