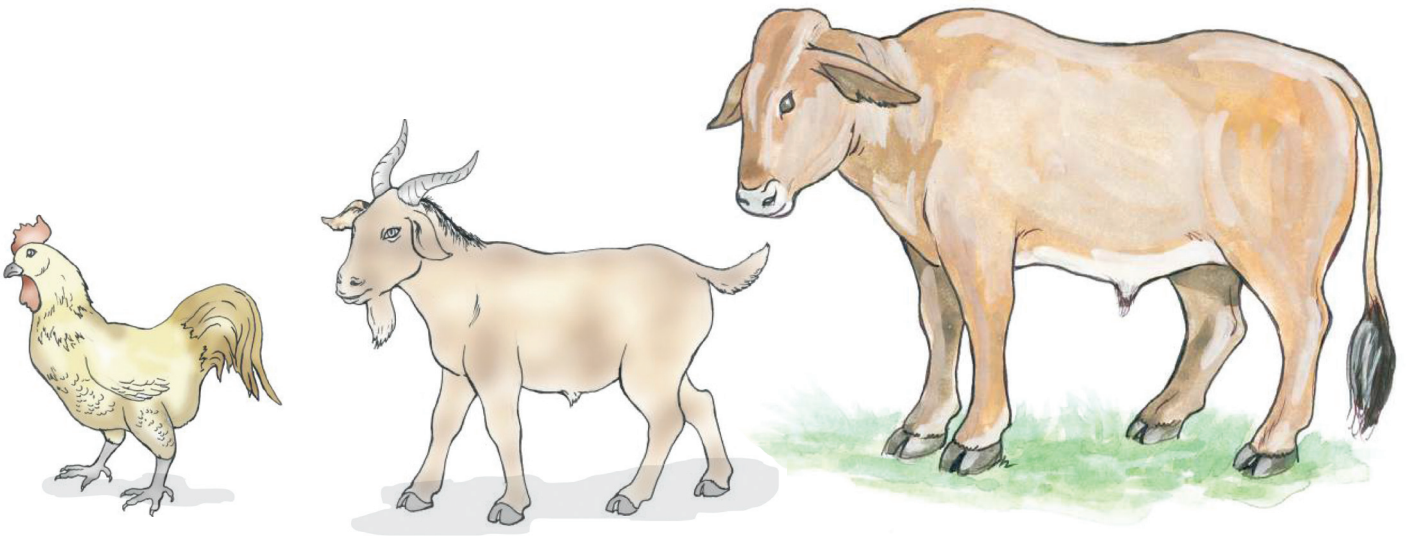


UKUGCINWA KWEZIFUYO NGENDLELA EPHAKEMEYO

UKUQAKATHEKA KWEZIFUYO EZILOHLONZI

- Izifuyo ezilohlonzi njalo ezivumayo esigabeni ziqakathekile ekuphumeni lempumela ethokozisayo ekufuyeni.
- Ukuba lenkunzi, impongo lamaqhude alohlonzi kuqakathekile ekuzaleni izifuyo ezisezingeni elingaphezulu.



UBUBI BOKUZALISANA KWEZIFUYO EZILOBUHLOBO

- Izifuyo ezizalwayo zizalwa zizincane.
- Izifuyo ezizalwayo ziya fuba njalo azibi lamandla.
- Izifuyo ezizalwayo zihlaselwa lula yimkhuhlane.
- Izifuyo ezizalwayo ezinengi ziyafa zisazincane.
- Izifuyo ezizalwayo azizali kuhle zizala zisequsa iminyaka.



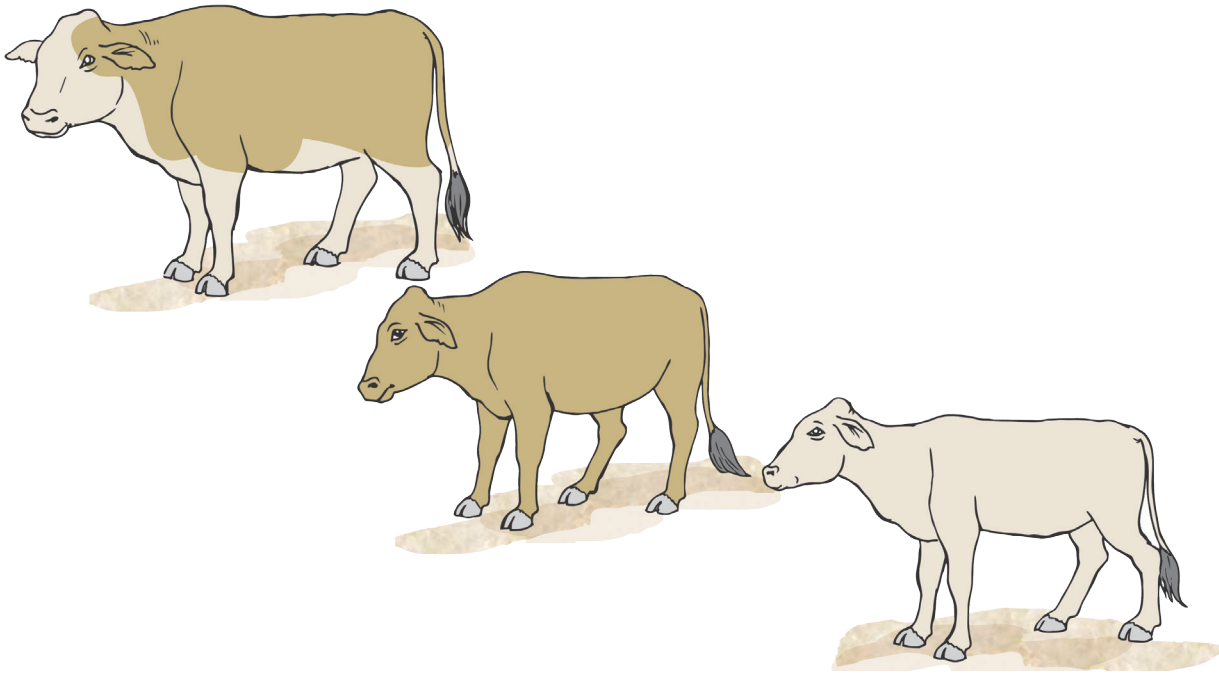
USAID
UNCEDO OLUELA
EBANTWINI BEAMERICA



CNFA
Cultivating New Frontiers
in Agriculture

SIVEKELA NJANI UKUZALISANA OKWEZIFUYO EZILOBUHLOBO

- Inkunzi, impongo kumbe iqhude elitshiywa isikhathi eside lisesibayeni okweminyaka edlula emithathu kungabangela ukuthi izifuyo ezinye zicine zizala labantwana bazo okuyikho okungakhuthazwayo.
- Amathole lamazinyane amaduna azalwa esibayeni kumele athenwe kumbe athengiselwe ezinye izakhamuzi ezikhatsana.
- Amaqhude azalwa ngekhaya kumele athengiswe kumbe atshintshiswe kubomakhelwane abakhatshana.
- Kuqakathekile ukuntshintshana lezinye izigaba esakhelene lazo inkunzi, impongo la maqhude ukwenqabela ukuzalisana kwezifuyo ezilobuhlobo.
- Ukuthengwa kwe nkunzi, impongo kumbe iqhude kuvela kwezinye indawo kulakho ukuthi kuphathise ekuzalweni kwezifuyo ezilohlonzi njalo ezinhle.



UKUQAKATHEKA KOKUDLA OKWAKHA UMZIMBA KANYE LEZEMPILAKAHLE YEZIFUYO

- Ukudla okwakha umzimba kwezifuyo kwenza zibukeke njalo zincomeke lezinye ezizalwayo zibazinhle njalo.
- Ukugcina izifuyo zilempilakahle eqondileyo kwenza ukuthi kuzalwe izifuyo ezinhle.

