



**USAID**  
FROM THE AMERICAN PEOPLE

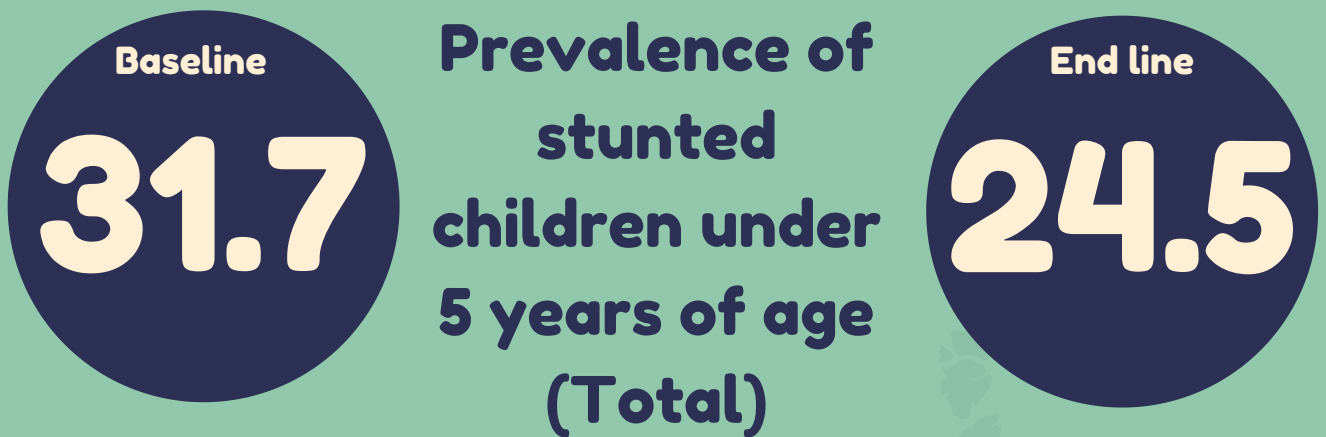


**CNFA**

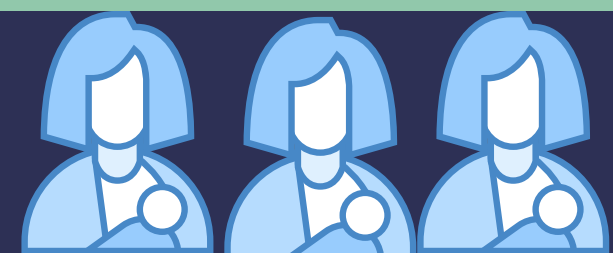
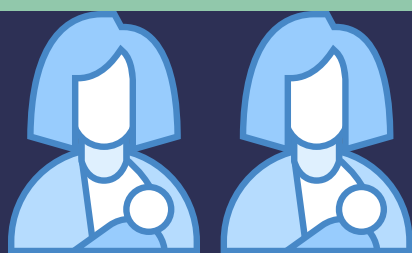
# COMPARISON OF BASELINE AND ENDLINE INDICATORS:

## AMALIMA ZIMBABWE FY 2013 FFP DEVELOPMENT FOOD ASSISTANCE PROGRAM

### CHILDREN'S HEALTH AND NUTRITION INDICATORS:



Stunting is often compounded by infectious diseases, represents deficits in physical growth, and may also reflect cognitive development impairments. Stunting may be the result of chronic or recurrent malnutrition in utero, infancy, early childhood, and adolescence.



Infants should be exclusively breastfed for the first six months of life to achieve optimal growth, development and health. Exclusive breastfeeding protects against diarrhea, common childhood illnesses and malnutrition. An exclusively breastfed child is 14 times less likely to die in the first six months than a non-breastfed child (Lancet Journal, 2008).